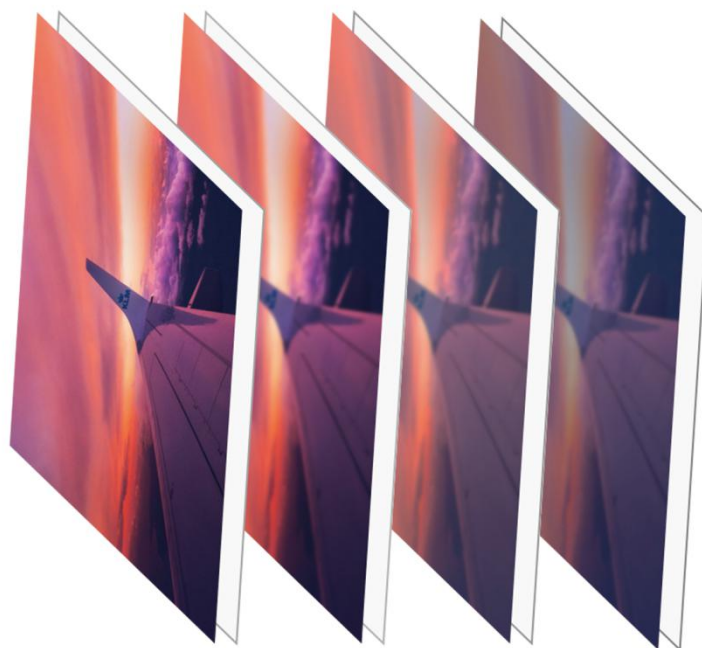


# ES2

## LED sending controller

Version: v2.4

Release Date: November 2021



## Specification



TEL 400 159 0808  
Web: [www.kystar.com.cn](http://www.kystar.com.cn)

**Beijing KYSTAR Technology Co., Ltd.**

Professional Ultra HD Video Display  
Control system integrated solution and service provider

# Small Send ES2 Product Specification

## Summary

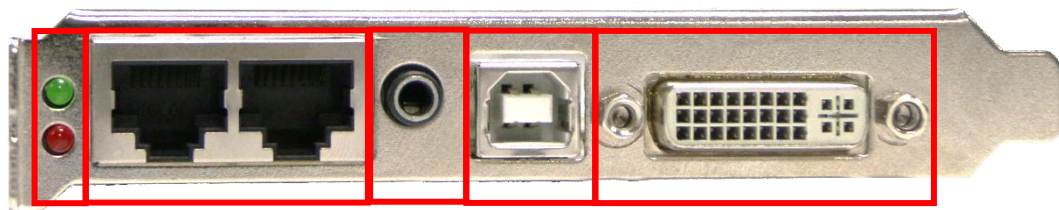
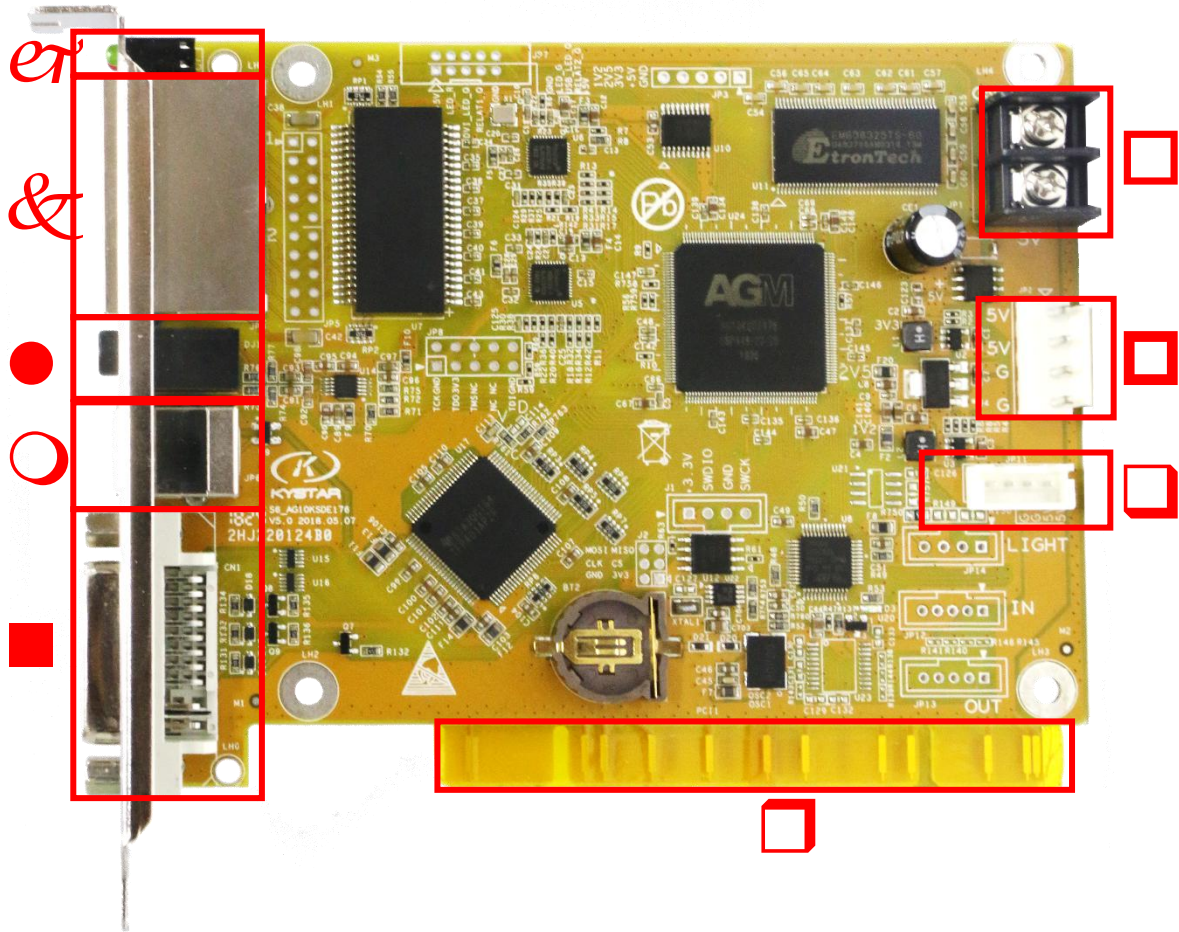
Kystar ES2 sending card is an important part of the main control system of LED. It is used to receive data from computer and other devices, and convert it into network signal and transmit it to receiving card. ES2 sending card adopts the industry's top design technology, in line with international and industry standards.

With a variety of power supply mode, it is more convenient to use.

## Functional characteristics

- One DVI video input and two network ports output.
- One way stereo audio input, with the use of multi-functional card transmission audio.
- The single card carries 1.31 million pixels, and the aspect ratio can be set arbitrarily, with a maximum width of 4000 and a maximum height of 2000.
- Supports the function of storing backup data and realizes one-click repair.
- Support EDID management.
- Support color rendition function.
- Supports power connection fault protection function.

## Panel description



Serial number	Function description
<i>er</i>	Signal running State Indicator
<i>&amp;</i>	Two Gigabit ports, lan1 and lan2 ports
●	Audio Input Interface
○	USB control terminal for PC upper computer control sending card
■	DVI Input interface
□	JP1, 5V direct plug terminal, providing 5V voltage
□	JP2, 4P straight needle white seat, providing 5V voltage
□	J11, small 4P interface, providing 5V voltage
□	PCI slot, providing 5V voltage

## Port specification

Input port		
Type	Number	Specifications
DVI	1	DVI-D input, support custom input resolution signal
Audio	1	3.5mm Audio Input Interface

Output port		
Type	Number	Specifications
LAN	2	Gigabit Network Output Port, Receiving Card

Control port		
Type	Number	Specifications
USB (type-B)	1	USB control port can control sending card with PC software

J3 Big 4P Power Supply Interface Definition				
Pin	1	2	3	4
Definition	VCC	GND	GND	GND

J13 Small 4P Power Supply Interface Definition				
Pin	1	2	3	4
Definition	VCC	VCC	GND	GND

Specification for whole machine	
Input power	3.5V – 6V, 0.6A – 1.0A
Working temperature	0-45°C
Outline size	132.51×99.8mm (L×W)
Supported Screen Types	Monochrome/Dual/Full-color Real Pixel/Virtual Pixel
Number of On-board Receiving Cards (Single Network Port)	240 (Single Network Port)
Data interface	Gigabit network
Working current	0.6A - 1.0A
Protective current	3.0A
Working voltage	3.5V – 6V
Working temperature	-20°C -70°C
Limit operating temperature	-25°C - 75°C
Working humidity (%)	5%-95%

# Annex: Equipment Dimension Map(mm)

